

KIWICORDER  
GO E'SY BLUES

by Judith Bell



# GO EASY BLUES

## Teaching notes

4

### Go E'sy Blues

for three descant recorders, plus improvised soloists. There is optional alto and bass. parts and the tenor can be included by playing the descant 1 part (the melody).

This piece is all about the minor blues (in E) in a laid back swing style, and only uses 4 notes, E, G, A and B, for the melody and improvisation.



The first section is in unison where the two focuses are the laid back feel, giving a little more weight (rather than thinking too much of an accent) to the last two quavers of beats 3 and 4. It also has a strong focus on improvisation.

In the second section (letter **B**), the melody is played in harmony by the other recorder parts (like a recorder "big band").

Each section has demo improvisations the first time to give ideas, and leaves those bars blank the second time for you, the player, to try your own ideas. In a group you may like to have different students take a turn in each 2 bar gap, or have one student improvise for a whole time through. The advanced recorder part is a notation of the solo ideas on the recording demo.

There is also a more up-tempo backing version of this.



# Go E'sy Blues

12 bar blues in E minor



Judith Bell

Medium swing, laid back

♩ = 100



Listen to the groove and improvise in the 2-bar gaps using the cued notes as a guide



Descant Recorder 2 Lower harmony

# Go E'sy Blues

12 bar blues in E minor



Judith Bell

Medium swing, laid back

8  $\text{♩} = 100$  4 **A**

9

13

17 **B**

21

25 1.

29 2. tr

Listen to the groove and improvise in the 2-bar gaps using the cued notes as a guide

Copyright © 2023 Judith Bell



# Go E'sy Blues

12 bar blues in E minor

Judith Bell

♩ = 100 Medium swing, laid back

8 **A**

4

9

2 2

17 **B**

2 2

22

1. 2

29

2. tr

Listen to the groove and improvise in the 2-bar gaps using the cued notes as a guide



Alto Recorder (optional)

# Go E'sy Blues

12 bar blues in E minor



Medium swing, laid back

♩ = 100

4

5 **A**

9 2 2

17 **B** 2 2

25 1. 2

29 2. tr

Listen to the groove and improvise in the 2-bar gaps using the cued notes as a guide

Copyright © 2023 Judith Bell

Tenor Recorder

# Go E'sy Blues

12 bar blues in E minor

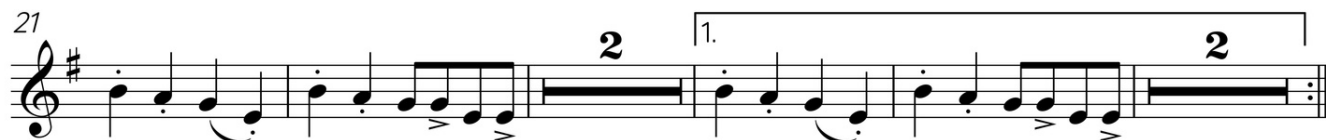


Judith Bell

Medium swing, laid back

♩ = 100

**A**



Listen to the groove and improvise in the 2-bar gaps using the cued notes as a guide

Copyright © 2023 Judith Bell



Bass Recorder

# Go E'sy Blues

12 bar blues in E minor



Judith Bell

Medium swing, laid back

$\text{♩} = 100$

**A**

4

9

2

2

**B**

17

2

2

25

1.

2

2.

30

Listen to the groove and improvise in the 2-bar gaps using the cued notes as a guide

Copyright © 2023 Judith Bell

Descant Recorder 1 Melody B A G E  
Piano

# Go E'sy Blues

12 bar blues in E minor



Judith Bell

Medium swing, laid back ♩ = 100

Medium swing, laid back ♩ = 100

Em<sup>7</sup> Am<sup>7</sup> B7(#9)

ad. lib

5 **A** UNISON SECTION  
B A G E

**A** Em<sup>7</sup>

9

Am<sup>9</sup> Em<sup>7</sup>

13

C<sup>7</sup> B<sup>13</sup> Em<sup>7</sup> B7(#9)

V.S.

Copyright © 2023 Judith Bell



2

17 **B** HARMONY SECTION

**B**

Em7

21

Am9

Em7

25

1.

C7

B13

Em7

B7(#9)

29

2.

C7

B13

Em7

Em%

*tr*

Listen to the groove and improvise in the 2-bar gaps using the cued notes as a guide



# Go E'sy Blues

12 bar blues in E minor

Judith Bell

Medium swing, laid back

$\text{♩} = 100$

Descant Recorder 1  
Melody  
B A G E

Descant Recorder 2  
Lower harmony

Descant Recorder 3  
Upper harmony

5 **A** UNISON SECTION  
B A G E

D. Rec.

9

D. Rec.

13

D. Rec.

Copyright © 2023 Judith Bell



2

**B**

17

HARMONY SECTION

D. Rec.

D. Rec. (lower)

D. Rec. (upper)

21

D. Rec.

D. Rec. (lower)

D. Rec. (upper)

25

D. Rec.

D. Rec. (lower)

D. Rec. (upper)

29

D. Rec.

D. Rec. (lower)

D. Rec. (upper)

Listen to the groove and improvise in the 2-bar gaps using the cued notes as a guide



# Go E'sy Blues

12 bar blues in E minor

Judith Bell

♩ = 100 Medium swing, laid back

Descant Recorder 1  
Melody  
B A G E

Descant Recorder 2  
Lower harmony

Descant Recorder 3  
Upper harmony

Advanced  
Descant Recorder

Alto Recorder  
(optional)

Tenor Recorder

Bass Recorder

♩ = 100 Medium swing, laid back  
ad. lib

Em<sup>7</sup> Am<sup>7</sup> B7(#9)

Piano

V.S.

Copyright © 2023 Judith Bell



**A** UNISON  
B A G E

5

D. Rec. 1

Adv. D. Rec.

Alto. Rec.

Bass. Rec.

Example solo ideas

3

Pno.

**A**  
Em7

Detailed description: This block contains the first system of a music score. It features four recorder parts (D. Rec. 1, Adv. D. Rec., Alto. Rec., Bass. Rec.) and a piano accompaniment (Pno.). The recorder parts play a unison melody of the notes B, A, G, E. The piano accompaniment provides harmonic support with chords and a bass line. A section for 'Example solo ideas' is marked in the Adv. D. Rec. part, showing a triplet of notes. The system is labeled with a box 'A' and the chord 'Em7'.



9

D. Rec. 1

Adv. D. Rec.

Alto. Rec.

Bass. Rec.

Pno.

Am9

Em7

Detailed description: This block contains the second system of the music score, starting at measure 9. It continues with the same four recorder parts and piano accompaniment. The piano accompaniment changes to an Am9 chord in the first measure and an Em7 chord in the second measure. The recorder parts continue their melodic line.



13

D. Rec. 1

Adv. D. Rec.

Alto. Rec.

Bass. Rec.

Pno.

C7 B<sup>13</sup> Em<sup>7</sup> B7(#9)



17

**B** HARMONY

D. Rec. 1

D. Rec. 2 (lower)

D. Rec. 3 (upper)

Adv. D. Rec.

Alto. Rec.

Tenor. Rec.

Bass. Rec.

Pno.

**B** Em<sup>7</sup>

V.S.





21

D. Rec. 1

D. Rec. 2 (lower)

D. Rec. 3 (upper)

Adv. D. Rec.

Alto. Rec.

Tenor. Rec.

Bass. Rec.

Pno.

Am<sup>9</sup> Em<sup>7</sup>

3 tr

Detailed description: This musical score block covers measures 21 to 24. It features seven vocal staves (D. Rec. 1, D. Rec. 2 (lower), D. Rec. 3 (upper), Adv. D. Rec., Alto. Rec., Tenor. Rec., Bass. Rec.) and a piano accompaniment staff (Pno.). The key signature is one sharp (F#). The piano part includes chords Am<sup>9</sup> and Em<sup>7</sup>. The Adv. D. Rec. part has a triplet and a trill in measure 23.

25

D. Rec. 1

D. Rec. 2 (lower)

D. Rec. 3 (upper)

Adv. D. Rec.

Alto. Rec.

Tenor. Rec.

Bass. Rec.

Pno.

1. C<sup>7</sup> B<sup>13</sup> Em<sup>7</sup> B<sup>7</sup>(#<sup>9</sup>)

3 3 3 3 3

Detailed description: This musical score block covers measures 25 to 28. It features the same seven vocal staves and piano accompaniment staff as the previous block. The piano part includes chords C<sup>7</sup>, B<sup>13</sup>, Em<sup>7</sup>, and B<sup>7</sup>(#<sup>9</sup>). The Adv. D. Rec. part has five triplets in measures 27 and 28. A first ending bracket is present over measures 25-28.



29

2.

D. Rec. 1

D. Rec. 2 (lower)

D. Rec. 3 (upper)

Adv. D. Rec.

Alto. Rec.

Tenor. Rec.

Bass. Rec.

Pno.

C<sup>7</sup> B<sup>13</sup> Em<sup>7</sup> Em<sup>6/9</sup>

tr

Listen to the groove and improvise in the 2-bar gaps using the cued notes as a guide

# Kiwicorder Descant 1 - note glossary

