

KIWICORDER
MEMORIES

by Judith Bell



MEMORIES

Teaching notes

8

Memories

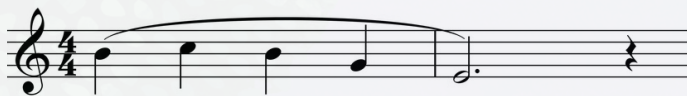
duet for descant recorder and treble/tenor/flute.

Memories is a gentle piece written for descant recorder with a duet part that can be played on a flute, treble recorder, or tenor recorder.

The accompaniment track has piano, cello and clarinet, but it can easily be performed live with just the piano accompaniment.

A focus in this piece is to enjoy the long G's, listening to the intonation (tuning) and harmonies and countermelodies underneath. These will require big breaths to sustain the gentle but long phrases.

The other challenge in this piece is the chance to aim for a smooth change between B and C and throughout the opening phrases that engage B-C-B-G and landing on low E or D smoothly.



Remember to breathe before each long phrase - we don't want anyone fainting!

Someone described this piece as sounding like a farewell. Whatever memories or pictures this piece might make come to mind, I hope you enjoy the major 7th harmonies (typically a dreamy sound), enjoy the changes of harmonic centre underneath, and are able to add your own expression.



Memories



Judith Bell

$\text{♩} = 96$, Dreamily and gently **4**

5 ♩ B C B G E B C B G D

mp

9

13 13 G , C G To Coda

17

21 21 E D E D A

D.S. al Coda

25 A G A G E D A G D

♩ Coda 29 Big breath *p*



Alto or Tenor Recorder or flute

Memories



$\text{♩} = 96$, Dreamily and gently 4

5 5 ♩

2nd time only

mp

9 play both times

mp

13 13

To Coda

17

21 21

2

26

D.S. al Coda

29 Ⓢ Coda

p

Copyright © 2023 Judith Bell

Descant Recorder Melody
Alto or Tenor Recorder or flute

Memories



Judith Bell

Dreamily and gently
♩ = 96

5 B C B G E B C B G D

4 4

mp

2nd time only

play both times

mp

10 13 G

15 To Coda

21 E D E D A

25 A G A G E D A G D D.S. al Coda

⊕ Coda
29 Big breath

p

p

Copyright © 2023 Judith Bell

Descant Recorder Melody
Alto or Tenor Recorder or flute
Piano

Memories



Judith Bell

♩ = 96, Dreamily and gently

C(add2) Am⁹ Fmaj7 G7(b9)

Ped. Ped. Ped. Ped.

Detailed description: This system shows the piano accompaniment for the first four measures. The music is in 4/4 time. The right hand plays a melody of quarter notes: C4, E4, G4, A4, B4, A4, G4, F4. The left hand plays a bass line of quarter notes: C3, E3, G3, A3, B3, A3, G3, F3. Pedal points are indicated below the bass line for each measure.

5 5

D. Rec. mp

A. Rec. mp

Pno. sim.

C(add2) Am⁹ Fmaj7 G7(b9)

Ped. Ped. Ped. Ped.

Detailed description: This system covers measures 5-8. The D. Recorder part starts with a finger number '5' in a box above the first measure. The A. Recorder part has a '2nd time only' instruction above the second measure. The piano accompaniment has a 'sim.' (simile) instruction above the right hand in the third measure. Chords C(add2), Am⁹, Fmaj7, and G7(b9) are written above the piano part. Pedal points are indicated below the piano part.

9

D. Rec.

A. Rec. mp

Pno.

C(add2) Am⁹ Fmaj7 Gm⁹

Ped. Ped. Ped. Ped. V.S.

Detailed description: This system covers measures 9-12. The D. Recorder part has a 'play both times' instruction above the first measure. The A. Recorder part has a 'mp' (mezzo-piano) dynamic marking. The piano accompaniment has a 'Gm⁹' chord in the fourth measure. Pedal points are indicated below the piano part, and 'V.S.' (Vivace) is written at the end of the system.

Copyright © 2023 Judith Bell

Descant Recorder Melody, Alto or Tenor Recorder or flute, Piano



2

13

13 G ,C G To Coda

D. Rec.

A. Rec.

13

Abmaj7 Fm(add2) Eb(add2) To Coda

Pno.

17

D. Rec.

A. Rec.

Abmaj7 Fm9 C(add2)

Pno.

21

21 E D E D A

D. Rec.

A. Rec.

21

Bb(add2) Gm(add2) D(add2) Bm9

Pno.



Descant Recorder Melody, Alto or Tenor Recorder or flute, Piano

25 A G A G E D A G D **D.S. al Coda**

D. Rec.

A. Rec.

Pno. **G⁹ D.S. al Coda**

B^b(add2) Gm⁹ Dm⁹

Ped.

⊕ **Coda**
29 Big breath

D. Rec.

A. Rec.

⊕ **Coda**
E^b(add2) C(add2) Cmaj7(add9)

Pno.

Ped.

Kiwicorder Descant 1 - note glossary

